

# CILINDRO

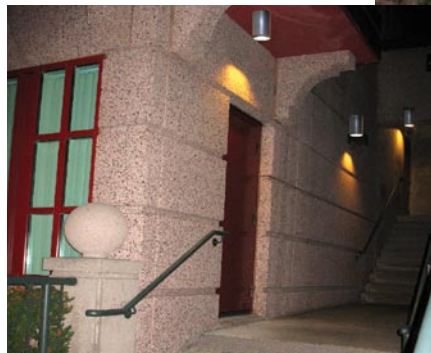
ceiling mount

## EUDC-II | Ceiling Mount



### APPLICATIONS

- Designed for Wet Location
- Indoor or Outdoor Use
- Walkways, Corridors
- Building Entrances
- Doorways
- Building Accent



Description:  
EUDC-II Ceiling Mount

### SPECIFICATIONS

### CUT SHEET FOR APPROVAL

### DIMENSIONS

Catalogue No.  
**EUDC-II-CM-8-900-LAMP-VOLT-COLOUR-OPTIONS**

SERIES	MODEL	SIZE	MOUNTING	MAX. WATTAGE	VOLT	COLOUR	OPTIONS
EUDC-II CM	900	8"	CM - Ceiling Mount	PLC 26 max PLT 42 max 70W-MH max	120 277 347	PACE Standard Textured Colours Only	

PACE Textured Paint only



Designed for Maximum Ambient Temp.  
of 35° Celsius (95° Fahrenheit)  
— for other applications please consult factory



Listed to applicable  
CSA and UL standards

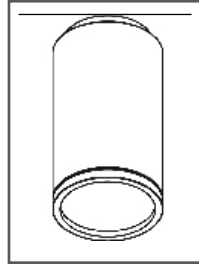


Wet Location Luminaire



# CILINDRO

## CUT SHEET | EUDC-II CEILING MOUNT



Designed for Maximum Ambient Temperature of 35° Celsius (95° Fahrenheit) – for other applications please consult factory

**Description:**

EUDC-II Ceiling Mount

### Approval Process & Procedure

1. Write item codes in boxes below (eg. on right).
2. Go over written codes to ensure accuracy.
3. Read through Terms & Conditions.
4. Sign cut sheet below in designated area.
5. Submit cut sheet with signature to Pace Illumination by FAX to:  
604-876-8639 or email to: [customerservice@paceillumination.com](mailto:customerservice@paceillumination.com).

Example:

Series	Model	Size	Lamping	Volt	Colour	Options
EUDC-II	900	8	2 X PLC 26	120	TBK	TPS

### Ordering Code Guide:

Series:	Model:	Size:	Lamping:	Volt:	Colour:	Options:
EUDC-II-CM	900	8				
SERIES	MODEL	SIZE	LAMPING*	VOLT	COLOUR	OPTIONS
EUDC-II-CM	900	8"	150W INC 26W PLT 32W PLT 42W PLT*  50W MH 70W MH 100W MH  HID = ED17 Lamp Bases standard (medium)	120 277 347	<b>Textured Finishes only</b> TAL textured aluminum TBK textured black TBZ textured bronze TWH textured white  RAL custom textured colours available	<b>TPS</b> Tamper-proof screws

\* Click here to read product info regarding the current 42 watt lamp and ballast issues.

### PACE Standard Colours

Textured Finishes



### Signature (required)\*:

.....

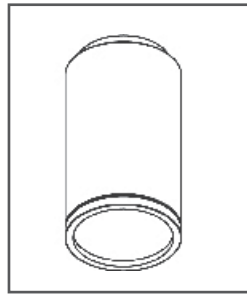
\* Please check box if you agree to the Terms & Conditions when placing this order. Signing this cut sheet confirms that the signee agrees to the terms as stated. PACE Illumination will no longer be processing orders without a signed approval.

[Click here to view Terms and Conditions.](#)



# SPECIFICATIONS | EUDC-II Ceiling Mount

CILINDRO



## APPLICATIONS:

- Suitable for exterior and interior use
- Illuminates exterior entrances
- Highlights interior architectural detailing

### Description:

EUDC-II Ceiling Mount

### STANDARD FEATURES

- 3 mm (.0938") durable aluminum housing with seamless finish
- Stainless steel hardware
- Silicone gasket
- Clear tempered glass lens
- Conforms to applicable UL and CSA standards
- Spun aluminum, electro-polished reflector

### CUT SHEET FOR APPROVAL

### DIMENSIONS

### Mounting

- Formed aluminum arm with wall plate
- Mounts to standard 4" J-Box

### Ballast

- Pendant mount HID = magnetic ballast
- Compact fluorescent lamp = electronic ballast standard
- HID = ED17 lamp bases standard (medium)

### Finish

- Standard textured polyester powder coat finish
- RAL colours also available



Wet Location Luminaire



Listed to applicable CSA and UL standards



Designed for Maximum Ambient Temperature of 35° Celsius (95° Fahrenheit) – for other applications please consult factory

SERIES	MODEL	SIZE	LAMPING*	VOLT	COLOUR	OPTIONS
EUDC-II-CM Ceiling Mount 14" Height	900	8"	150 W INC	120	<b>Textured Finishes only</b>	TPS Tamper-proof screws
			26 W PLT	277		
			32 W PLT <a href="#">*Click here to view 32Watt PLT Photometrics</a>	347	TAL textured aluminum	
			42 W PLT*		TBK textured black	
			50 HPS		TBZ textured bronze	
			70 HPS		TWH textured white	
			50 MH			
			70 MH			
			100 MH			
			HID = ED17 Lamp Bases standard (medium)		RAL custom textured colours available	

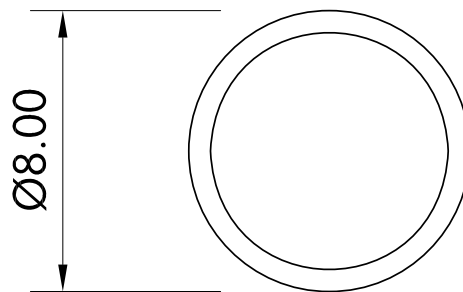
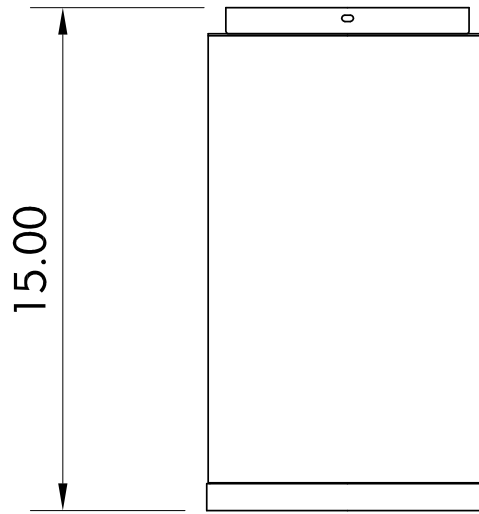
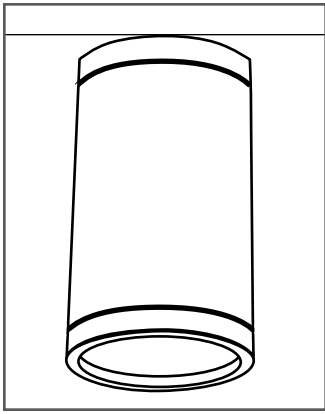
\* Please read product info regarding the current 42 watt lamp and ballast issues.

PACE Textured Paint only



.....**Ceiling Mount | EUDC II-Ceiling**

**Dimensions**



**D/L CEILING**

ceiling mount **CILINDRO**

## \* 42 Watt PLT Lamps

We have experienced several issues with premature lamp and ballast failures on Pace products incorporating PLT 42 watt lamps, particularly multiple lamps and high ambient temperature applications.

We are currently engaged in discussions and research with our ballast suppliers and with the lamp manufacturers to determine the cause. They have tested some 42 watt lamps and have found them to be unstable and running at a much higher temperature and wattage than the specifications published by the lamp manufacturer.

Until this issue is resolved, we recommend to our agents and their customers the use 32 watt lamps. Our tests have found them to provide the same or higher light levels when lamp and ballast degradation is taken into consideration.

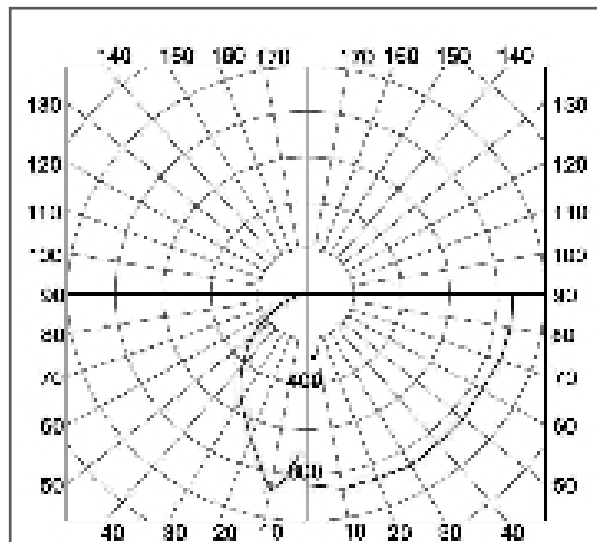
**Pace Illumination Corp.** will keep you updated on further developments with this issue.





**PHOTOMETRIC DRAWING**  
for Cilindro Eudc-II Ceiling Mount

**PLT 32W**



Max plane at H = 30 Max cone at V = 10

S/MH= 0.8 MAX CANDLEPOWER: 876.09

**SUMMARY DATA**

EFFICIENCY DETAIL:	62.6%
LUMENSLAMP:	2400
NO. OF LAMPS:	1
LUMINOUS OPENING:	
INPUT WATTS:	37