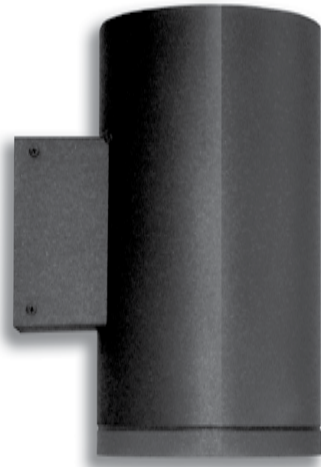


CILINDRO

wall mount

Wall Mount | EUDC-II | Down Light



APPLICATIONS

- Designed for Wet Location
- Indoor or Outdoor Use
- Walkways, Corridors
- Building Entrances
- Doorways
- Architectural Detail



Description:

EUDC-II Down Light

SPECIFICATIONS


CUT SHEET FOR APPROVAL

DIMENSIONS

Catalogue No.

EUDC-II-DL-8-900-LAMP-VOLT-COLOUR-OPTIONS

SERIES	MODEL	SIZE	MOUNTING	MAX. WATTAGE	VOLT	COLOUR	OPTIONS
EUDC-II	900	8"	DL - Down light	70W - MH max 42W - PLT max	120 277 347	PACE Standard Textured Colours Only	


 Designed for Maximum Ambient Temp.
 of 35° Celsius (95° Fahrenheit)
 – for other applications please consult factory



Listed to applicable
CSA and UL standards

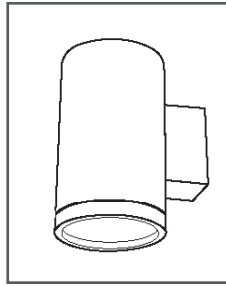


Wet Location Luminaire

PACE Textured Paint only



CUT SHEET | EUDC-II DOWN LIGHT



Designed for Maximum Ambient Temperature of 35° Celsius (95° Fahrenheit) – for other applications please consult factory

Description:

EUDC-II Down Light

Approval Process & Procedure

1. Write item codes in boxes below (eg. on right).
2. Go over written codes to ensure accuracy.
3. Read through [Terms & Conditions](#).
4. Sign cut sheet below in designated area.
5. Submit cut sheet with signature to Pace Illumination by FAX to: 604-876-8639 or email at: customerservice@paceillumination.com.

Example:

Series	Model	Size	Lamping	Volt	Colour	Options
EUDC-II	900	8	2 X PLC 26	120	TBK	TPS

Ordering Code Guide:

Series:	Model:	Size:	Lamping:	Volt:	Colour:	Options:
EUDC-II-DL	900	8				
SERIES	MODEL	SIZE	LAMPING*	VOLT	COLOUR	OPTIONS
EUDC-II-DL 14" Height	900	8"	150W INC 26W PLT 32W PLT 42W PLT* 50W MH 70W MH 100W MH	120 277 347	Textured Finishes only TAL textured aluminum TBK textured black TBZ textured bronze TWH textured white RAL custom textured colours available	TPS Tamper-proof screws

* Click here for product info regarding the current 42 watt lamp and ballast issues.

PACE Textured Paint only



Signature (required)*:

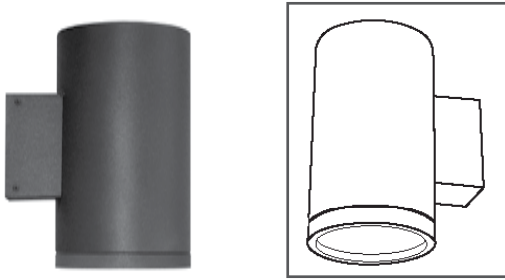
.....

* Please check box if you agree to the Terms & Conditions when placing this order. Signing this cut sheet confirms that the signee agrees to the terms as stated. PACE Illumination will no longer be processing orders without a signed approval.

[Click here to view Terms and Conditions.](#)

SPECIFICATIONS | EUDC-II Down Light

CILINDRO



APPLICATIONS:

- Suitable for exterior and interior use
- Illuminates exterior entrances
- Highlights interior architectural detailing

Description:

EUDC-II Down Light

STANDARD FEATURES

- 3 mm (.0938") durable aluminum housing with seamless finish
- Stainless steel hardware
- Silicone gasket
- Clear tempered glass lens
- Conforms to applicable UL and CSA standards
- Spun aluminum, electro-polished reflector

Mounting

- Formed aluminum arm with wall plate
- Mounts to standard 4" J-Box

Ballast

- Down wall mount HID = magnetic ballast
- Compact fluorescent lamp = electronic ballast standard
- HID = ED17 lamp bases standard (medium)

Finish

- Standard textured polyester powder coat finish
- RAL colours also available

[CUT SHEET FOR APPROVAL](#)

[DIMENSIONS](#)



Wet Location Luminaire



Listed to applicable CSA and UL standards



Designed for Maximum Ambient Temperature of 35° Celsius (95° Fahrenheit) – for other applications please consult factory

SERIES	MODEL	SIZE	LAMPING*	VOLT	COLOUR	OPTIONS
EUDC-II-DL Down Light 14" Height	900	8"	150 W INC 26 W PLT 32 W PLT 42 W PLT* 50 HPS 70 HPS 50 MH 70 MH 100 MH *Click here to view 100W MH photometrics	120 277 347	Textured Finishes only	TPS Tamper-proof screws SC 45° = Hang Straight - Stem Mount Only Max. stem length= 12ft Safety Cable
					TAL textured aluminum TBK textured black TBZ textured bronze TWH textured white RAL custom textured colours available	

* Please read product info regarding the current 42 watt lamp and ballast issues.

PACE Standard Colours

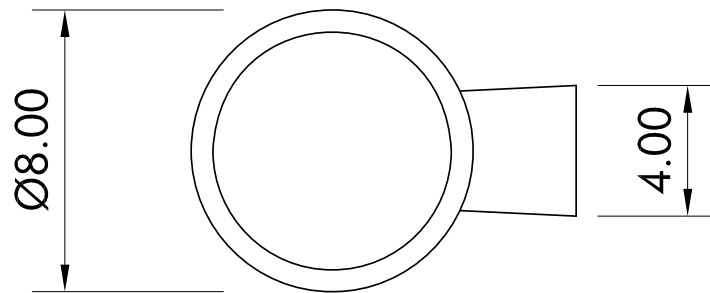
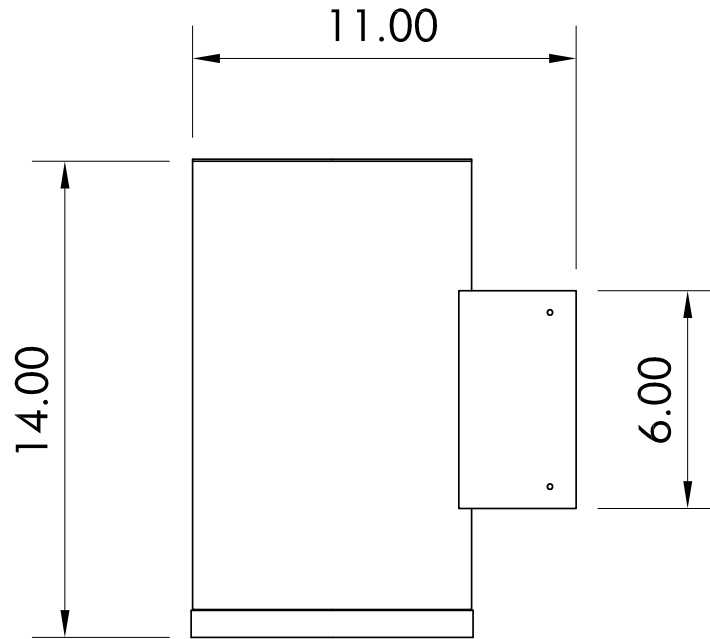
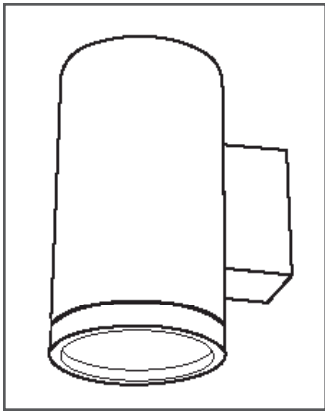
Textured Finishes

TBZ TBK TAL TWH



Wall Mount | EUDC II-Down Light

Dimensions



D/L WALL ARM

wall mount **CILINDRO**

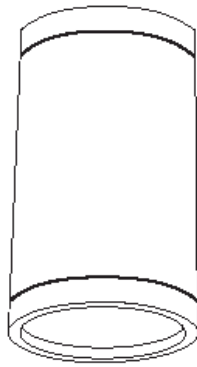
* 42 Watt PLT Lamps

We have experienced several issues with premature lamp and ballast failures on Pace products incorporating PLT 42 watt lamps, particularly multiple lamps and high ambient temperature applications.

We are currently engaged in discussions and research with our ballast suppliers and with the lamp manufacturers to determine the cause. They have tested some 42 watt lamps and have found them to be unstable and running at a much higher temperature and wattage than the specifications published by the lamp manufacturer.

Until this issue is resolved, we recommend to our agents and their customers the use 32 watt lamps. Our tests have found them to provide the same or higher light levels when lamp and ballast degradation is taken into consideration.

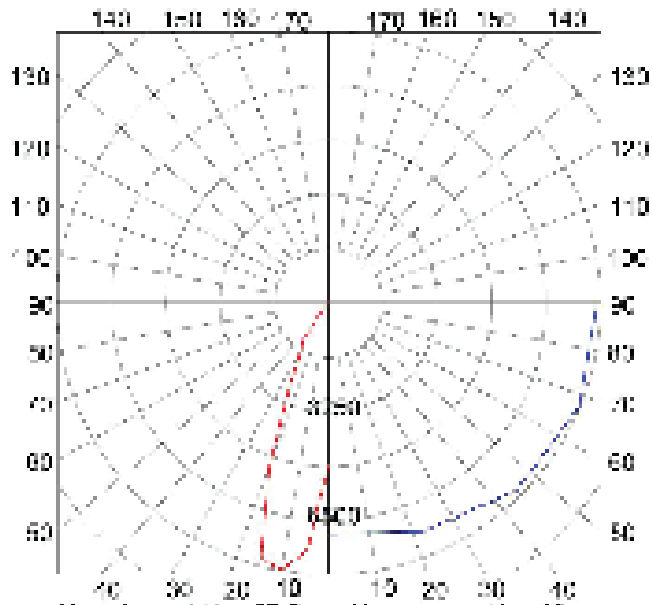
Pace Illumination Corp. will keep you updated on further developments with this issue.



PHOTOMETRIC DRAWING

for Cilindro Eudc-II Down Wall Mount

100W - MH ED 17



Max plane at H = 67.5 Max cone at V = 10

S/MH= 0.8 MAX CANDLEPOWER: 8093.16

SUMMARY DATA

EFFICIENCY DETAIL:	55.2%
LUMENSLAMP:	8500
NO. OF LAMPS	1
LUMINOUS OPENING:	6" DIA.
INPUT WATTS:	110



INFORMATION

TERMS AND CONDITIONS

FREIGHT PACE Illumination reserves the right to charge freight extra to remote locations in all Territories and Provinces in Canada, Alaska, Hawaii, Puerto Rico and all other remote Protectorates in North America.

All poles and anchorage are shipped freight extra.

PACE reserves the right to route all shipments on prepaid freight shipments. Shipments will be made via express, air, or any other manner requested, when the customer assumes the freight costs over and above the least expensive routing selected by PACE. Authorization in writing is required from the customer.

CLAIMS Title of ownership transfers to purchaser upon delivery to the transportation company. The transportation company assumes responsibility when shipment is picked up at factory dock. Inspect goods upon arrival. All claims for shortages or damages during transportation to be made against the delivering carrier. All other claims, including missing components, must be submitted to PACE within 15 days of receipt of shipment.

DELIVERY The scheduled delivery from PACE is the best approximation of the expected shipping date, but is not a guaranteed shipping date. PACE shall not be responsible for any direct or indirect damage or loss resulting from delay in shipping. Time of delivery is not the essence of this agreement.

RETURNS Standard products may be returned only with written consent from PACE. Return shipments must be in original cartons, with a copy of the Return Authorization document, freight prepaid. All returns are subject to a minimum of 25% restocking charges, plus any reconditioning costs. Returns due to defective products must be returned for testing, with written consent from PACE. Custom products are non-returnable.

WARRANTY All PACE products are carefully inspected and tested before shipping, and are warranted to be free of material and workmanship defects for a period of two years from date of invoice. Claims must be submitted in writing to the factory.

PACE will not accept charges for any labor, repair cost or transportation charges without expressed, prior written authorization. The responsibility of PACE for any defective materials is limited solely to the replacement or repair of material, and does not include any incidental or consequential damages which may be incurred. No warranty, expressed or implied, exists other than that described above. No person, agent or distributor has authority to give any other warranty on behalf of PACE.

BALLAST/LAMP WARRANTY Ballasts, lamps and transformers supplied in PACE fixtures are those of recognized responsible manufacturers. Brand specific ballast, transformer or lamp requests will be handled by quotation only. Claims for defective ballasts, lamps or transformers should be made directly to the appropriate manufacturer through their local service center or field representative. Any labor charges for replacement of defective ballasts, lamps or transformers will not be accepted by PACE. A copy of the O.E.M. standard replacement program is available upon request.

QUOTATIONS Quoted prices are valid for 60 days and are subject to change upon receipt and review of approval drawings.

PRICE All prices are subject to change without notice. Prices exclude all taxes and freight where applicable.

CANCELLATION CHARGES Modified fixtures are non-refundable, and non-cancellable, unless written approval is issued by PACE. Changes to, or cancellation of works in progress will be subject to costs incurred for work completed.

MINIMUM BILLING ADDITIONS Minimum billing is \$200.00 net per order. Replacement parts are exempt. Additions to orders already received and entered into production be considered as a new order.

TERMS Terms are net 30 days.

ACCEPTANCE OF ORDERS All orders must be signed off on the cut sheet before the job will be released. All orders are subject to PACE's final approval.

DESIGN CHANGES PACE Illumination Corp. reserves the right to change product design, and/or catalog information without prior notification.

ESCALATION OF HOLD ORDERS Unless otherwise agreed upon, all prices are firm for delivery within six months of receipt of order at PACE. PACE reserves the right to review and adjust pricing as necessary to reflect increased costs of goods on Hold Orders older than six months.

SALES TAX All taxes extra where applicable.